

Carbon Arc Beam Generator

Carbon arc beam was used extensively as searchlight during WWII. Fig. 1 shows a basic configuration.

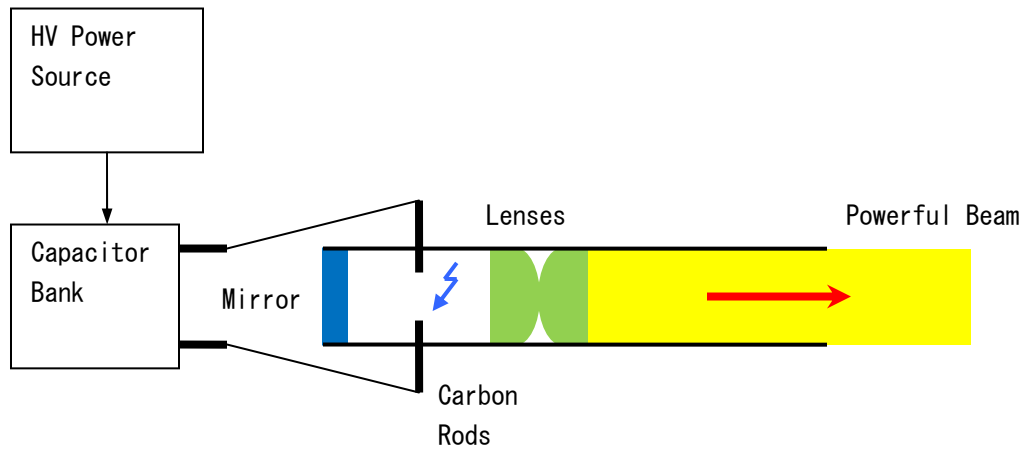


Fig. 1. Carbon-arc beam.

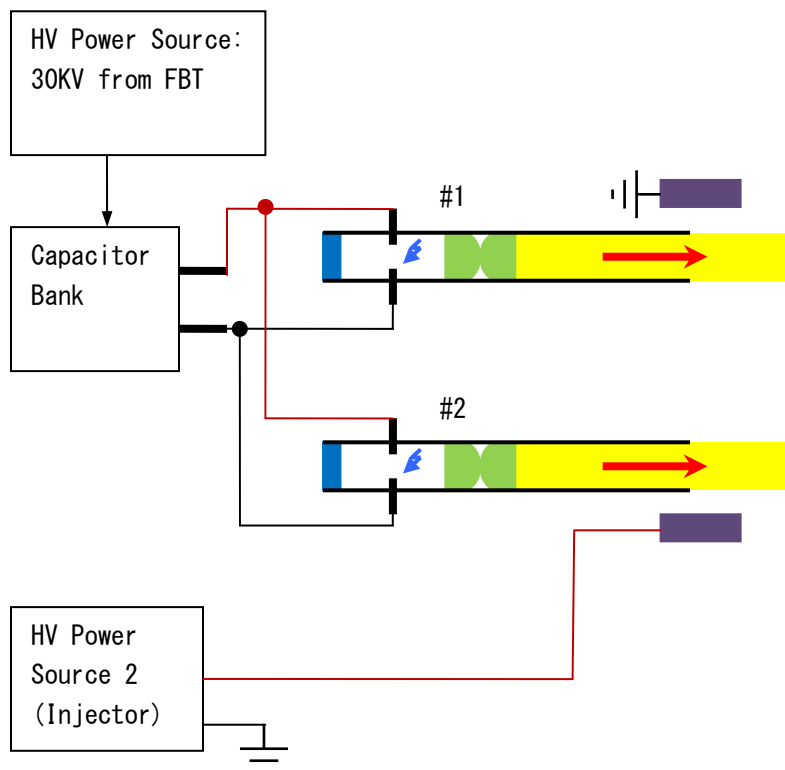


Fig. 2. Dual-beam Carbon-arc light.

Basic beam generator can be modified as shown in Fig. 2 so that high-voltage (HV) electricity rides the beam. **This design has never been tested.**

Dual-beam is required to provide HV return for any ungrounded target. A single beam may be used if the HV source and target are grounded. Ionization is realized by UV photons by knocking off electrons from the air molecules.

4beowulf7@gmail.com